

Year 6 Standard Assessment Tests (SATs)

11.05.26 - 15.05.26



Timetable for the week:

Date	Test
Monday 11th May 2026	9:30 start Grammar & Punctuation test - 45 minutes (56 mins, 15 seconds for extra time) BREAK 10:40 11:15 start Spelling Test - 20 minutes (<i>no additional adults needed</i>)
Tuesday 12th May 2026	9:20 start English Reading Test - 60 minutes (<i>no additional adults needed</i>) (1 hour, 15 mins for extra time) BREAK 10:40
Wednesday 13th May 2026	9:30 start Maths Arithmetic (Paper 1) - 30 minutes (37 minutes and 30 seconds for extra time) BREAK 10:15 11:05 start Maths Reasoning (Paper 2) - 40 minutes (50 minutes for extra time)
Thursday 14th May 2026	9:35 - Maths Reasoning (Paper 3) - 40 minutes (50 minutes for extra time) <input type="button" value="v"/>

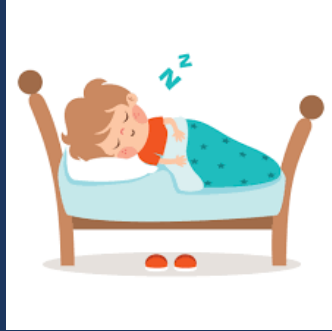
- Children arrive to school at usual time
- When they arrive, they have an opportunity to go to the toilet/have a drink
- We invite children to bring in a small, desk-sized “mascot” to support wellbeing



How we have been supporting your children:

- SATs boosters
- The room size when they will do the assessment
- Thought about any special circumstances your child may need
- The adult(s) that will be present when they do the assessment
- Top tips on the morning, before the assessment

Useful tips for the week:



- Before they go in for a test/exam, be reassuring and positive. Let them know that they just need to do their best and that their score in this test is not a reflection of how hard they have worked.
- Have a good nutritious breakfast
- Have opportunities to exercise throughout the week
- Don't be overly anxious about test scores, but encourage your child to take tests seriously.
- Don't judge your child on the basis of a simple test score.
- Your child's school report will have a "Teacher Judgement" and you will receive SATs results in a separate email (usually a week later). Our office team then email these results across to your child's secondary school.

Why SATs can be a positive thing for your children to do:

- Can give children a sense of achievement after their hard work this year and throughout primary school. It is a Key Stage 2 SAT and therefore tests them on content between Year 3 and Year 6.
- Good practice to support your children with assessments in secondary school.
- A sense of togetherness from the year group when they are taking place



What your children have to look forward to after:

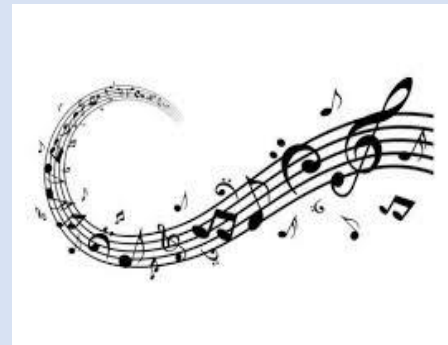
End of SATs
week treat



Year 6 Camp



Dragon's Den



The Play



Leavers Events

**WELCOME TO OUR
Year 6 Leavers'
service 2025!**



St. John's
Col E Primary School
Clifton & Redland



Ways you can help in the weeks leading up to SATs:

- KS2 SATS buster and 10 minute tests
- Children completing homework tasks and extra SATs practice
- Continue to be mindful of your child's wellbeing